



**Church of the
Guardian Angel**
A STEWARDSHIP PARISH

Blessed be God forever

***320 Franklin Turnpike
Allendale, New Jersey 07401***

WWW.GUARDIANANGELCHURCH.ORG

PARISH MISSION STATEMENT

We, the people of Guardian Angel Parish in the Archdiocese of Newark, are a community of Catholic Christians being formed by the Gospel of Jesus Christ. As a community open to the power and gifts of the Holy Spirit, we strive to work, share, and enjoy life as a witness to the true meaning of Christian Living.

We believe our mission is:

- To be a community of loving and caring people.
- To teach and witness the Good News of Jesus Christ.
- To celebrate that Good News in Sacraments and Prayer.
- To minister to all people in their spiritual and physical needs.

SACRAMENT OF BAPTISM

Please call Jo Ann Del Gatto at 201-981-7081 to arrange for infant baptism and parental instruction.

**SACRAMENT OF
CONFIRMATION**

Please contact Katie Cavazzini at 201-934-5554 for information about teen sacramental preparation.

**SACRAMENT OF EUCHARIST
The LORD'S DAY**

Saturday Eve - 5:30 p.m.
(Sunday Obligation)
Sunday - 7:30 a.m., 10:00 a.m., 11:30 a.m.
WEEKDAYS: Monday - Friday - 9:00 a.m.
(Rectory Chapel)
HOLY DAYS: schedule posted in bulletin.

**SACRAMENT OF
RECONCILIATION**

Saturday - 4:30 p.m. to 5 p.m. and by appointment.

SACRAMENTS FOR THE SICK

Please contact the Rectory for the Sacrament of the Anointing of the Sick and to request Communion for the homebound.

SACRAMENT OF MATRIMONY

Please call the Rectory at least one year in advance.

SACRAMENT OF HOLY ORDERS

Please contact Father Charlie or the Archdiocesan Vocations Office at 973-497-4365.

***RCIA -The Rite of
Christian Initiation of Adults***

If you are an adult interested in becoming Catholic, or if you are a baptized Catholic who would like to receive the Sacrament of Eucharist and/or Confirmation, please call Fr. Charlie at 201-327-4359 or Susan Brown at 201-327-2360.

PASTORAL STAFF

	201-327-4359
Rev. Charles Pinyan, <i>Pastor</i>	x201
cpinyan@guardianangelchurch.org	
Rev. Donald Sheehan, <i>Priest in Residence</i>	x214
Rey Escalon, <i>Deacon</i>	201-264-0145
escalonr@hotmail.com	
Lori O'Reilly, <i>Parish Secretary</i>	x202
loreilly@guardianangelchurch.org	
Irene Nayden, <i>Parish Catechetical Leader</i>	x208
inayden@guardianangelchurch.org	
Jean Borzilleri, <i>Secretary for Religious Education</i>	x205
jborzilleri@guardianangelchurch.org	
Silvana Anello, <i>Rental Coordinator</i>	x218
sanello@guardianangelchurch.org	
Katherine "Katie" Cavazzini, <i>Youth Minister</i>	x204
kcavazzini@guardianangelchurch.org	
Andrew Monticello, <i>Director of Music</i>	201-925-4756
a_monticello@hotmail.com	
Robert Yager, <i>Custodian</i>	x203
ryager@guardianangelchurch.org	

Stan Brach and Jean Escalona, *Trustees*

Rectory Phone	(201) 327-4359
Rectory Fax	(201) 327-6478
Youth Ministry	(201) 934-5554
Religious Education	(201) 327-0352
Rentals	(201) 783-5414

Pastoral Council

Parish Pastoral Council meets in the Rectory on the second Monday of the month at 7:30 P.M.

Prayer Chain Ministry

Coordinator: Arlene Sabino (201) 934-8441

STEWARDSHIP OF TIME AND TALENT

Ministry of Worship

<i>Adult Leader for Children's Church</i>	
Irene Nayden	(201) 327-0352
<i>Altar Linens</i>	Jean Borzilleri (201) 818-1559
<i>Altar Server</i>	Michael Schmidt (201) 934-3353
<i>Collection Counters</i>	Frank Anello (201) 934-1331
<i>Extraordinary Ministers of Holy Communion</i>	
Mary O'Flaherty	(201) 652-5286
<i>Monthly Rosary</i>	Kathie Brach (201) 236-3116
<i>Music/Choir Ministry</i>	
Andrew Monticello	(201)-925-4756
<i>Readers of the Word (Lectors)</i>	
Robert & Patty Durso	(201) 760-9169

Ministry of Faith Formation

<i>Baptismal Preparation Ministry</i>	
JoAnn Del Gatto	(201) 981-7081
<i>Catechetical Ministry (1-9)</i>	
Irene Nayden	(201) 327-0352
<i>Cornerstone - Men's Spirituality</i>	
Rey Escalon	(201) 264-0145
<i>Cornerstone - Women's Spirituality</i>	
Carolyn Blake	(201) 825-1931

Ministry of Faith Formation (Cont'd)

<i>RCLA - Rite of Christian Initiation of Adults</i>	
Susan Brown	(201) 327-2360
<i>RCLA - Rite of Christian Initiation-Children</i>	
Irene Nayden	(201) 327-0352

Ministry of Evangelization

<i>AIDS Ministry</i>	Noreen Prior (201) 236-1921
	Arlene Sabino (201) 934-8441
<i>Messengers of Love</i>	Elayne McGill (201) 327-1547
<i>Photography Ministry</i>	Bill Konvit (201) 825-2972
<i>Prayer Chain Ministry</i>	Arlene Sabino (201) 934-8441

Ministry of Service

<i>Art & Environment Ministry</i>	
Sophia Boniello	(201) 803-6459
Julia DiNardo	(201) 723-7783
Lori Massie	(201) 281-7515
<i>Bereavement Ministry</i>	Joe Lisella (201) 825-2204
<i>Communication/Marketing</i>	
Gerry Del Gatto	(201) 825-7383
<i>Computer/Data Entry</i>	Richard Shinnick (201) 236-2112
<i>Food Pantry Ministry</i>	John Lowe (201) 327-9397
	Sue Zitolo (201) 934-9372
<i>Funeral Ministry</i>	John Frederick (201) 327-3753
<i>Giving Tree Ministry</i>	Anna DiMiceli (201) 825-7039
<i>Grounds & Maintenance Ministry</i>	
Father Charlie	(201) 327-4359
<i>Homeless Shelter Ministry</i>	Joe Zitolo (201) 934-9372
<i>Hospitality Ministry</i>	Kathleen Lucas (201) 236-2577
<i>Peace & Justice Ministry</i>	Gerry Del Gatto (201) 825-7383
<i>Remembrance Mass</i>	Kathie Brach (201) 236-3116
<i>Respect Life Ministry</i>	Veronica Lenzi (201) 962-3027
<i>Soup Kitchen Ministry</i>	Chuck Assicurato (201) 327-1393
<i>Welcome Ministry</i>	Jean Escalona (201) 825-3817

Ministry of Stewardship & Finance

<i>Finance Council</i>	Michael Simendinger (201) 236-3135
<i>New Energies</i>	Susan Bolton (201) 248.0412
<i>Pastoral Council</i>	Elaine Kehoe (201) 818-3946
<i>Stewardship Committee</i>	Jean Escalona (201) 825-3817

Ministry of Community Building

<i>Carnival</i>	Irene Nayden (201) 327-4936
-----------------	-----------------------------

Ministry of Youth Stewardship

<i>Festival of Carols</i>	Andrew Monticello (201)-925-4756
<i>Living Stations</i>	Andrew Monticello (201)-925-4756
<i>Youth Group (Grades 6-8, 9-12)</i>	
Katie Cavazzini	(201) 934-5554
<i>Youth Mass Music Ministry</i>	
Andrew Monticello	(201)-925-4756

Visit www.guardianangelchurch.org for up to date information about the parish! Are you a snowbird? Moving? You can update your address by going to the About section and scroll down to Update Parish Information! Go to the calendar and be a part of all the great things happening at Guardian Angel!



A Message from the Pastor

July 30, 2017

Seventeenth Sunday in Ordinary Time

Dear parishioners,

It's exciting each day to watch the progress on the long-awaited reconstruction of the church front steps, plaza and "island" areas. **This past week, for example,** Belgian blocks were installed in place of some curbing, and we are just awaiting the town inspection so we can lay the foundation for the new ramp access.

Planning for this project goes back to 2008, when we first intended to launch the parish Capital Campaign that would include a liturgical renovation of our parish church building. National economic challenges led us to postpone the project a few years, but with the generosity and commitment of parishioners we were able to complete the interior work in early 2014.

Over the years puddles and ice patches often formed at the top of the steps in front of the church doors. And you may have seen the results of our many attempts to patch the cracks in the ramp and the enormous sidewalk blocks of the church plaza. Now we are resolving these issues – and more! The goals are to be practical and aesthetic – creating a welcoming environment before and after gatherings in the church and being a clearer beacon to the community. In a nutshell, what is being accomplished this summer in **Phase I** includes:

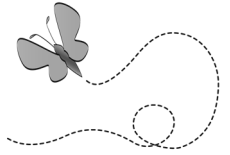
- Demolition of the church steps and reconstruction using bluestone
- New casings for the damaged portico pillars
- Replacement of plaza concrete squares with paving stones, featuring a "Jerusalem Cross" design element
- Upgrading of lighting
- New landscaping around church steps, plaza and the church "island"
- The addition of benches

The projected budget is approximately \$175,000, which we anticipate covering from funds currently held in our restricted Capital Campaign account and Living Stones account. Some variables (in particular the condition of the base of the church steps) may cause an increase in costs. We hope to have work completed by Labor Day. After committee consideration of various proposals, the design/contractor is DiTomaso Landscape Group of Franklin Lakes.

We are excited about this project! And my personal hope is that once it is completed, we may work together toward funding and accomplishing **Phase II**, which would extend the improvements around the sides and back of the church and include new walkways connecting the Church with the Auditorium and Barn.

PLEASE NOTE: the Church remains open throughout the project for prayer and Masses. Please follow the outdoor signs, and use the two side doors near the front of the church. Those needing ramp access should use the door on the Barn side. Please exercise caution when opening the doors, and pull

Bereavement Ministry Fall Session Begins in September



"We are told that time will heal the grief, but it is in taking the time to grieve that we are healed."

The Bereavement Ministry offers support to anyone who has recently experienced the loss of a loved one. The trained and compassionate facilitators will navigate you through the grief process with discussions about loneliness, anger, guilt, family dynamics, and inner healing. You are invited to attend eight sessions presented over the course of eight weeks. This is a safe, confidential place to find support and understanding from those who have experienced a similar loss. Registration is required and there is no fee. Early registration is suggested as groups are limited in size. For registration, information, and one-on-one support until the group begins, call 201-327-1313 ext. 872 and someone will return your call.

Trained facilitators are from Church of the Presentation, Guardian Angel and St. Luke's

STEWARDSHIP WEEKLY REFLECTION

July 30, 2017

17th Sunday in Ordinary Time

"We know that all things work for good for those who love God, who are called according to his purpose." - ROMANS 8:28

Do you really trust God? Do you believe that all things work for good? Faith is a challenge for everyone at times. Putting our trust in God, in everything we do, means that God's plan for our lives may be different than our plan. When one door closes, another one opens. Trust in God, His plan is always better.

them closed behind you when entering or exiting (Let's keep out those chipmunks!)

*

Separately, our parish rebates from your donations to the Living Stones capital campaign for the Archdiocese are also funding work on the **Barn and Auditorium** this summer.

Over the past weeks, the Barn interior and exterior were painted, and the windows caulked. In August, the interior of the Auditorium will also be repainted. This will make both facilities more attractive for all our varied parish uses of these buildings. In addition, we hope it will make them even more attractive as rental facilities – an important source of revenue to help sustain our parish! Please help promote these facilities as rentals for parties and other events. Our rental coordinator, Silvana Anello, may be reached at 201-327-4359 x 218 (office) or 201-783-5414 (cell).

In Christ,

Father Charlie

MASSSES for the WEEK

© J. S. Paluch Co., Inc.

Sunday	July 30
5:30 pm	Edward O'Flaherty
7:30 am	Carmello & Anna Gutto
10:00 am	Ronald Harman
11:30 am	Virginia Carrick
Monday	July 31
9:00 am	People of the Parish
Tuesday	August 1
9:00 am	Lauren Hanlon
Wednesday	August 2
9:00 am	William Hogan
Thursday	August 3
9:00 am	Jule Ressetar
Friday	August 4
9:00 am	Patricia Hajek
Saturday	August 5
5:30 am	Jack Gonzales Farrell
Sunday	August 6
7:30 am	Irene Austin
10:00 am	Edward & Jane VanTassel
11:30 am	Andrew & Marie Oleksak

STEWARDSHIP OF TREASURE

Guardian Angel is a tithing parish. Biblical tithing means 10% of gross income to God. We ask half of this, or 5%, for your Parish Church.

Weekly Offering

July 23rd collection was \$7,276 with \$3,832 from the collection basket and \$3,444 from Faith Direct.

This summer, I pray that you will have some quiet and restful time that includes the love, joy and peace of being with family and friends. During these summer months your generosity through *Faith Direct* can help provide the consistent resources we need to operate our parish and ministries. Visit www.faithdirect.net and use our church code NJ513. Thank you for your continue support of our parish family!

Fr. Charlie

Center for Food Action (CFA)

REQUESTED ITEMS FOR AUGUST

85 Boxes of Pancake Mix per week
85 Bottle of Pancake Syrup per week



Donations can be dropped off at the Food Pantry in the back of the Church. Monetary donations are always welcome and can be placed in the orange bucket at the Food Pantry. Please note that *Perishable Items Cannot Be Accepted*. If you have any questions or comments feel free to contact Sue Zitolo at 201-934-9372, szitolo@aol.com or John Lowe at 201-327-9397, john.lowejr@att.net.

READINGS FOR THE WEEK



Sunday:	1 Kgs 3:5, 7-12; Ps 119:57, 72, 76-77, 127-130; Rom 8:28-30; Mt 13:44-52 [44-46]
Monday:	Ex 32:15-24, 30-34; Ps 106:19-23; Mt 13:31-35
Tuesday:	Ex 33:7-11; 34:5b-9, 28; Ps 103:6-13; Mt 13:36-43
Wednesday:	Ex 34:29-35; Ps 99:5-7, 9; Jn 11:19-27 or Lk 10:38-42
Thursday:	Ex 40:16-21, 34-38; Ps 84:3-6a, 8a, 11; Mt 13:47-53
Friday:	Lv 23:1, 4-11, 15-16, 27, 34b-37; Ps 81:3-6, 10-11ab; Mt 13:54-58
Saturday:	Lv 25:1, 8-17; Ps 67:2-3, 5, 7-8; Mt 14:1-12
Sunday:	Dn 7:9-10, 13-14; Ps 97:1-2, 5-6, 9; 2 Pt 1:16-19; Mt 17:1-9

LISTEN TO YOUR DREAMS

God visits Solomon in a dream, and the scripture story nowhere tells us that Solomon awoke to have this conversation with God! So, still in his dream, Solomon answers God's question about what he desires most, and God grants his request for wisdom in abundance.

In our waking hours, we are much distracted by work, home, family, traffic, entertainment, and many worries. When we try to think about what we really want out of life, we have trouble even imagining what that might be. But deep inside, our real longings dwell, known to God and to the Holy Spirit. Our dreams, unencumbered by defenses, may hold clues to what our deepest needs are, or what bothers us most. They could be God speaking.

Copyright (c) J. S. Paluch Co., Inc.



Family Promise is almost here. We provide food, shelter and volunteers for sleepovers and help in various ways. **Our hosting nights will be on Tuesdays and Thursdays, a total of 6 nights for Guardian Angel parish volunteers.** The dates are as follows:

Tuesday, Aug. 29th & Thursday Aug. 31st at
 Calvary Lutheran Church
 Tuesday, Nov. 21st and Thursday, Nov. 23rd
 at Guardian Angel
 Tuesday, Jan. 9th and Thursday, Jan. 11th at
 Archer United Methodist Church

We need of volunteers to cook a dinner for each assigned night. Please contact Joe Zitolo at 201-934-9372 if you can help with this.

We also need two sleepover volunteers for each assigned night. Arrive between 6pm (dinner time) and 8pm, and leave at 6:30am after our guests depart for the main shelter in Ridgewood. Air mattresses, sheets and blankets are provided. Bring your own sleeping bag and pillow. If you can help with sleepovers please email Tony Sabino at TonyS22466@aol.com. Thank you for your support of this most important ministry.

Joe Zitolo
 201-934-9372

YOUTH MINISTRY

Peer Ministry

Peer ministry applications for the September Confirmation retreat were due to the Youth Ministry Office Friday, July 28th. Contact Katie *immediately* if you have not yet submitted your application at (kcavazzini@guardianangelchurch.org). Time is of the essence as we will begin team formation very soon!

Peer ministers are STRONGLY encouraged to attend the **Capuchin Youth Leadership Training Retreat** held at Capuchin Youth and Family Ministries (CYFM) Retreat Center in Garrison, NY the weekend of **Friday, August 25 – Sunday, August 27, 2017**. This leadership training retreat will allow peer ministers to grow in their faith while learning specific skills such as oral communication, collaborative skills, time management, leading discussions, group dynamics, Christ-like Leadership. CYFM's Leadership Training empowers teens with skills useful in school, youth group, parishes, and in life. This retreat is also a time of fun and spiritual growth for the peer ministers before being asked to lead others through a retreat. Guardian Angel will subsidize the cost of this vital training weekend. Contact Katie for more information.

COMING SOON...

Friday, July 28 Peer Ministry Application due!

Wednesday, August 23 Peer Ministry Formation begins
7:30pm Rectory

Friday, August 25- Sunday, August 27
Leadership Training Retreat

Wednesday, August 30 Peer Ministry Formation
7:30pm Rectory

Wednesday, September 6 Confirmation Retreat Parent Meeting 7:00pm Barn
Peer Ministry Formation
7:30pm Rectory

Wednesday, September 13 Peer Ministry Formation
7:30pm Rectory

Wednesday, September 20 Peer Ministry Formation
7:30pm Rectory

Friday, September 22 – Sunday, September 24
Confirmation Retreat Weekend

Katie Cavazzini - Youth Minister

201-934-5554 - kcavazzini@guardianangelchurch.org

Hold Your Next Event At Guardian Angel

Auditorium Capacity 325 People

Mmgr. Salemi Hall Capacity 75 People

Fully Air Conditioned

- Communion/Confirmation/Graduation Parties
- Retirement/Birthday Parties/Sweet 16/Quinceanera
- Fundraisers/Dance Recitals/Competitions
- Baby/Bridal Showers/Rehearsal Dinners
- Community/Corporate Meetings
- Holiday Parties/Repast Luncheons

Silvana Anello Rental Coordinator @ 201-783-5414 or
E-mail: sanello@guardianangelchurch.org

RELIGIOUS EDUCATION

The Religious Education Office is closed for the month of August. Schedules have been e mailed. If you are registered for either the Tuesdays or Home School and have not received a schedule, please contact the Religious e office at inayden@guardianangelchurch.org. If you have not yet registered we cannot guarantee your child space in a class for next year. Tuesday classes will begin on October 17th.

If you have registered for Home School classes and have not picked your materials, you may do so when the Religious Ed office re-opens on September 11th. Religious Ed office hours are from Monday to Thursday between the hours of 10:30 & 3:00. If those hours are not convenient for you, let us know in the Religious Ed office and we will be happy to make other arrangements. During August, I will be checking my email and can meet with you by appointment.

Summer is a great time to think about activities that your family might want to get involved in at Guardian Angel for next year. We always welcome any students from grade 4 and older to train to become an Altar Server. If you are interested or have any questions let us know.

For adults and older students (High School Seniors or older) we would love to have more volunteers for Children's Church, which continue at 11:30 Mass this fall. Contact the Religious Ed office for more information about this.

In the coming weeks we will continue to contact catechists for our Tuesday evening program. A few years ago we moved classes to church buildings. The new format was successful thanks to volunteer catechists. Several of our catechists in this program are not parents of students, but are happy to share their faith with our students. It is a great way to connect with the young people of our parish. If you think you would like to be a "guest speaker" for one Tuesday evening during the school year for either 6th, 7th or 8th grade, please let us know. We will be happy to go over the material with you and help you prepare in any way.

We continue to search for qualified catechists for our Tuesday afternoon program. These classes meet most Tuesdays from 3:30 until 5:00 between October and April. We desperately need catechists for grades 4 & 5. Please give prayerful consideration to helping out. For the past several years, we have had great success with High School juniors and seniors teaching. The kids love it and the teens get a lot out of it too!

If you have any questions you may contact the Religious Education Office at inayden@guardianangelchurch.org , jborzilleri@guardianangelchurch.org or 201-327-0352.

NAMI of Bergen County

The NAMI Family-to-Family Education Program begins in September! The Family-to-Family is a 12 week program designed for caregivers having a family member, age 18 or over, diagnosed with a serious mental illness. The program fosters learning, healing and empowerment among caregivers and has been described by some as a "journey of hope" and by many others as "a life changing experience." Classes are held at Church of the Presentation. Register early - space is limited. Class is every Monday evening Sept. 11 to Nov. 27th from 7pm to 9:30pm.

To register please call Marie Fuchida at 201-816-3735. The program is free.

BEREAVEMENT MINISTRY SUPPORT TRAINING

Do you feel called to serve the needs of the bereaved?

An eight-week Bereavement Ministry Support Training program is now open for registration. The course is offered by the Office of Family Life Ministries of the Archdiocese of Newark. Two hour sessions begin in September and continue into November. Choose from Thursday or Saturday morning class time. Participants will be trained as Bereavement Support Group Facilitators. For class time, location, registration and fee information contact Lauren Egan at 973-497-4327 or Lauren.Egan@rcan.org. Pre-registration is required; class size is limited. **Participants must meet the requirements of the Safe Environment Program of the Archdiocese of Newark.**

ASCENSION CEMETERY PRE-NEED PLANNING

Ascension Cemetery, Airmont NY has postponed the July 1st price increase (our first price increase in 4 years), until September 1, 2017! We are currently taking appointments over the phone to discuss 'Pre-Need Planning' options available for ground burial, mausoleum crypts, and niches for cremated remains, for the memorialization of your loved ones. We take great pride in keeping the grounds and chapel as beautiful and peaceful as possible for our families. Ascension Cemetery is celebrating its 50th Anniversary in Rockland this year. Please call or stop in to see which of our services best fits your needs. We look forward to meeting with you. Thank you!

Ascension Cemetery Staff
845-352- 7220

IMPORTANT CHURCH WEBSITES:

Church of the Guardian Angel Website:

www.guardianangelchurch.org

Facebook:

www.facebook.com/GuardianAngelChurchAllendale/

The Archdiocese of Newark

www.rcan.org

The Catholic Advocate

www.rcan.org/advocate

Away for the weekend? Go to: www.masstimes.org

New Energies PARISH PARTNERSHIP PROGRAM

St. Luke Church:

Visit www.churchofstluke.org for more information and parish bulletin.

Church of the Presentation:

Visit the website at www.churchofpresentation.org for more information, and the parish bulletin.

Grief to Grace Retreat Healing the Wounds of Abuse Kearny, New Jersey September 10 thru 15, 2017



This is the perfect time to embrace the healing you deserve. Survivors of abuse are invited to end the isolation and shame of past trauma as you embrace mercy, love and a miraculous journey to wholeness. Experience renewal and transformation of the toxic grief that lingers in your body and mind into a well-spring of cleansing grace to bring forth justice and inner peace.

Painful wounds can be the vehicle for exploring and revealing the deepest textures of your heart by journeying into the grief, opening to safely release the pain, and allowing ourselves to be taught, as we journey in solidarity without fear; without holding back; without blame or denial. You will recognize, perhaps for the first time, that Christ was beside you in every moment of your history. Grief to Grace provides a unique way to face the depth and tragedy of abuse while reclaiming your value and exceptional human dignity.

Grief to Grace is a five day psychological and spiritual journey for anyone who has suffered violation through physical, emotional or sexual abuse or neglect. It is appropriate for those who have endured rape, incest, or other forms of traumatic violation in childhood, adolescence or as an adult. It is also suitable for those who have suffered spiritual or sexual abuse by a member of the clergy. This model of care provides a powerful therapy for the soul.

Grief to Grace will help you identify the ways that past abuse may still impact your spirit as you enter into powerful meditations and reflections that allow your body and mind to be transformed into a new way to trust and appreciate your unique gifts, courage, creativity, and authentic yearning for connection and a supportive community. Embark on an adventure to release the pain and move forward in resurrection, reconciliation and freedom.

Please contact us for more details about Grief to Grace Retreats. Contact Cheryl at (973) 497-4350 or Jeanne at (610) 203-2002 or send an e-mail to rileyche@rcan.org. Additional information and upcoming retreats in other locations can be found at www.griefftoGrace.org. The retreat was composed by Dr. Theresa Burke, author of the Rachel's Vineyard Retreats for healing after abortion.

The retreat had a deep spirituality combined with a sound psychological foundation. It created a blessed, safe oasis of healing. Words cannot really do justice to the grace and healing of this wonderful experience. It was a journey into the mystery of my own soul. I was fascinated by the retreat and speechless at the depth of the growth and healing it facilitated. The commitment, love and compassion of the team and participants was awesome!"

COVER SHEET

CHURCH NAME AND ADDRESS

259750: Guardian Angel Church
320 Franklin Tpke.
Allendale, NJ 07401

PHONE

201-327-4359 x202

CONTACT PERSON

Lori O'Reilly

SOFTWARE

Microsoft Publisher® 2013
Adobe Acrobat XI® Standard
Windows 10

PRINTER

HP® OfficeJet Pro 8600 Plus

NUMBER OF PAGES SENT

1 through 7

SUNDAY DATE OF PUBLICATION

July 30, 2017

TRANSMISSION TIME

Thursday, 12 Noon

SPECIAL INSTRUCTIONS